

What Will You Make Today?

Tissue Paper Flowers

Supplies :

Tissue Paper
Pipe Cleaners or Wire
Scissors

Optional

Beads
Tape
Glue
Crepe Paper
Stapler



Process :

1. Cut tissue paper to size and shape for type of flower (e.g. 5" squares)
2. Stack the necessary number of tissue paper sheets for desired flower
3. Fold paper (like an accordion for most flowers)
4. Cut edges of tissue paper (examples below)
5. Secure tissue paper with pipe cleaner, wire, or stapler
6. Fluff the layers of paper

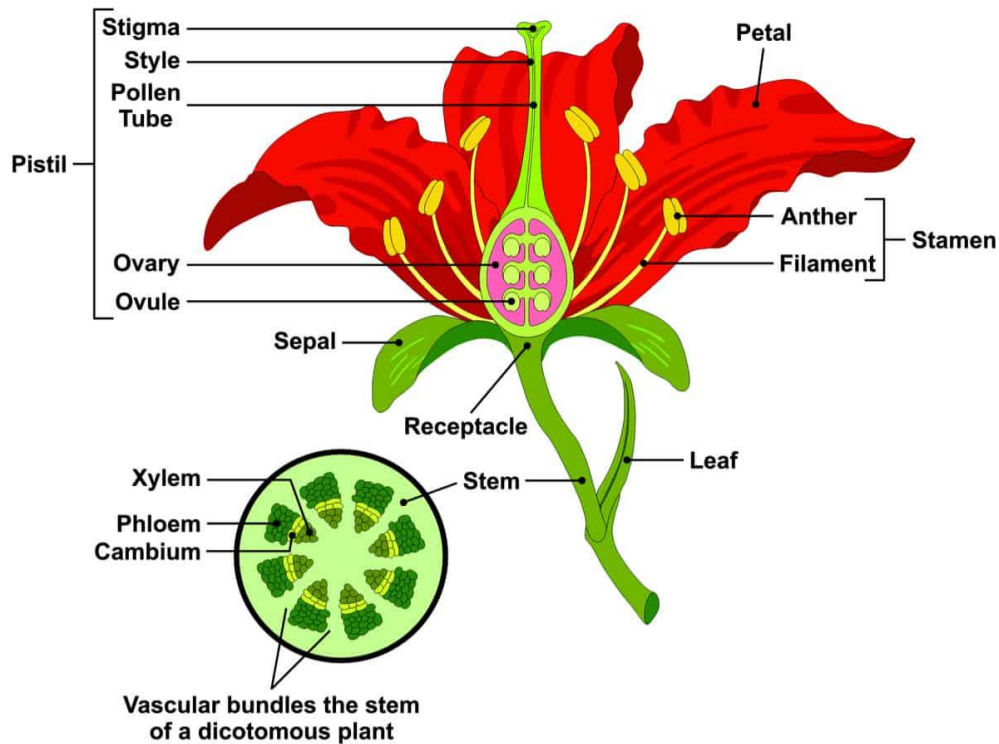
Optional :

7. Make/add leaves
8. Make/add Pistil, Stamen, Sepal
9. Make a bouquet





Parts of a Flower



Peduncle: The stalk of a flower.

Receptacle: The part of a flower stalk where the parts of the flower are attached.

Sepal: The outer parts of the flower (often green and leaf-like) that enclose a developing bud.

Petal: The parts of a flower that are often conspicuously colored.

Stamen: The pollen producing part of a flower, usually with a slender filament supporting the anther.

Anther: The part of the stamen where pollen is produced.

Pistil: The ovule producing part of a flower. The ovary often supports a long style, topped by a stigma. The mature ovary is a fruit, and the mature ovule is a seed.

Stigma: The part of the pistil where pollen germinates.

Ovary: The enlarged basal portion of the pistil where ovules are produced.