

What Will You Make Today?

Cardboard Weaving Loom

Supplies :

- Cardboard
- Ruler
- Scissors
- Pencil
- Yarn
- Darning needle



Process :

- Cut a piece of cardboard a few inches bigger than you want your weaving to be. This will be the base for your loom.
- Cut two strips of cardboard 1 inch x the width of your loom.
- Mark every $\frac{1}{4}$ " on
- the top and bottom of your loom being sure they line up
- Cut each mark $\frac{1}{4}$ " deep
- Glue 1" strips to top and bottom, just past the cuts. These help take the tension off of the loom and give you space between the yarn and loom to work
- If you are incorporating a design, draw it on the cardboard
- Knot yarn 1" from end to keep it from slipping through
- Start threading your warp- the vertical threads that you weave into- with the knot in the back and all warp on the same side of the loom
- Start weaving your weft into the warp
- Follow the pattern for your chosen weave



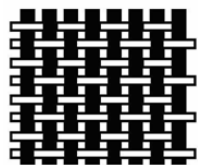
Weaving Vocabulary

1. **Loom**--a frame (or machine) on which weaving is done.
2. **Warp**--the vertical threads which form the base of the weaving; to warp means to string the threads onto the loom.
3. **Weft**--the horizontal threads which are woven across the warp.
4. **Selvedge** -- (selvage) the edge on either side of a woven fabric so finished as to prevent raveling. "DON'T PULL TIGHT-KEEP EVEN!"
5. **Basket Weave**-- a simple weave where the weft alternates over two and under two warp end
6. **Beat In** -- to push the new row of weft against the previously woven row.
7. **Beater** -- stick, fork or comb used to tightly pack the weft threads.
8. **Shuttle**--the tool that holds the weft. Some types of shuttles include stick shuttles, boat shuttles, and end feed shuttles.
9. **Fiber**--A long, thin thread of material like wool or cotton.
10. **Yarn**--fibers such as wool, cotton or silk that have been twisted into long strands.
11. **Pattern**--A design or motif that is regularly repeated.
12. **Tabby or Basic Weave** -- a simple weave where the weft alternates over one and under one warp end
13. **Weaving**-- is a method of fabric production. This is when two distinct sets of threads, fabric strips, string, yarn, paper, etc. are interlaced at right angles to form a piece of woven fabric or cloth.
14. **Fringe**--an ornamental border of threads left loose or formed into tassels or twists, used to edge clothing or material.
15. **Tapestry Needle**-- a blunt tipped sewing **needle** used on larger woven fabrics such as knit and crochet, plastic canvas, and even-to weave materials.

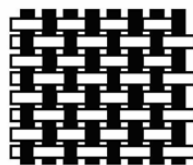
Mrs. Hurd

Art

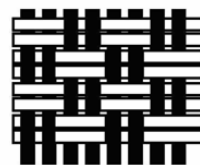
Rm 201



Plain weave
(directional)



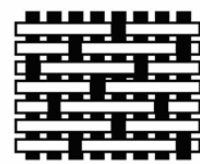
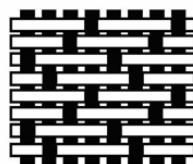
Plain weave
(uniform)



Basket (panama) weave



Various twill weaves



5-harness satin weave